

# SRS/Volvo LRB 8-2T1



## SRS/Volvo LRB 8-2T1

The SRS/SVABO LRB 8-2T1 Road Rail Access Unit is based on the Volvo FL618 4x2 Truck which has a standard day cab with 2+1 seating. The vehicle is equipped with an access unit giving a maximum height of 8.8m to floor level (9.9m working reach) and 5m either side from the centre line of the vehicle with a SWL of 350kg.

The vehicle is fitted with a Schunk WBL 85 pantograph earthing unit.

On rail the vehicle is operated either from the cab or from the platform of the access unit. Both access unit and vehicle are operated from the platform. The access unit can not be operated from the cab.

Mechanical padlock stops are fitted to limit the main rotation of the platform to the safe zone of operation.

The vehicle has a compressed air system and has two outlet socket located in the basket.

This vehicle is capable of driving on the Highways as a standard truck to and from the work location. Its gross weight is 18 tonnes and height on the highway is 3.55m with the platform stowed. The vehicle length is 9.9m and the vehicle width is 2.5m with the platform stowed. The maximum speed on the highway is 56mph. For the purposes of access requirements the vehicle dimensions are as previously quoted above. The base vehicle has a ground clearance of 200mm and an approach/departure angle of between zero degrees and 90 degrees. The vehicle has two driven wheels and will require made up access for on and off tracking. Vehicles may be placed on or off track and travelled under live Overhead Wires.

## ASPIRE RAIL

Unit 15b, Crewe Hall Enterprise Park, Cheshire, CW1 6UA  
Tel: 01270 254 176 Fax: 01270 253 267 email: [info@aspirerail.co.uk](mailto:info@aspirerail.co.uk)



# SRS/Volvo LRB 8-2T1



**ASPIRE RAIL**

Unit 15b, Crewe Hall Enterprise Park, Cheshire, CW1 6UA  
Tel: 01270 254 176 Fax: 01270 253 267 email: [info@aspirerail.co.uk](mailto:info@aspirerail.co.uk)



# SRS/Volvo LRB 8-2T1



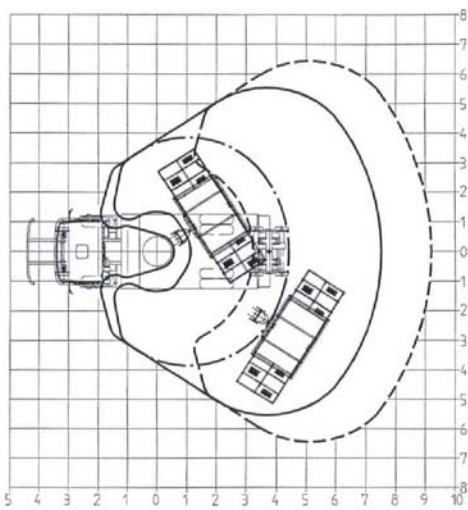
## SRS/SVABO LRB 8-2T1

DIAGRAM

J43789

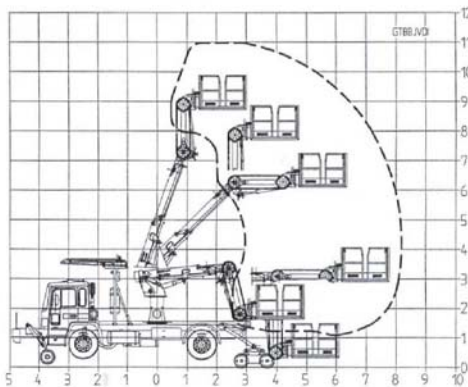
J8T034.DOC (000317)

Gäller under förutsättning att fordonet är stabiliserat – "Chassi stabil" på displayen.  
Only when the vehicle is stabilised, with the text "Chassis stabilised" on the display.



Max. 3 Personer eller 350 Kg. Max. 3 Persons or 350 Kg.	
Max. Horisontalkraft < 7,2 m.ö.r.ö.k. Max. Horizontal force < 7,2 m. from t.o.r.	*2000 N *2000 N
Max. Horisontalkraft > 7,2 m.ö.r.ö.k. Max. Horizontal force > 7,2 m. from t.o.r.	*1000 N *1000 N
Max. Vindhastighet. Max. Wind speed.	12,5 m/s. 12,5 m/s.
Max. Chassilutning. Max. Chassis gradient.	10 % 10 %.
Max. Rålsförhöjning. Max. Super elevation.	150 mm. 150 mm.
Rörelse Acceleration Acc. Value.	< 0,5 m/s <sup>2</sup> . < 0,5 m/s <sup>2</sup> .

\* = Riktad ± 5° bakåt i färdriktningen/  
Directed ± 5° backwards.



Vid monterad teleskopstång; Se separat diagram.  
See separate diagram, when wire lifter is mounted on the vehicle.

### MANUFACTURER:

AB SJÖLANDERS  
BOX 153  
283 23 OSBY  
SWEDEN  
TEL: + 46 (0)479-17500  
TELEX: + 46 (0)479-17545  
TYPE: **LRB 8-2T1**

SERIAL No: **9725 -**

*Jan Åström*  
AB SJÖLANDERS SMIDES &  
MEKANISKA VERKSTAD  
OSBY

Vi förbehåller oss rätten till ändringar i specifikation och utförande utan särskilt meddelande./  
We retain the right to make modifications to the specifications and the machine without prior notice. 1(1)

## ASPIRE RAIL

Unit 15b, Crewe Hall Enterprise Park, Cheshire, CW1 6UA  
Tel: 01270 254 176 Fax: 01270 253 267 email: info@aspirerail.co.uk

